

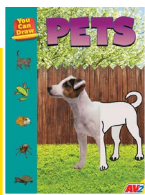
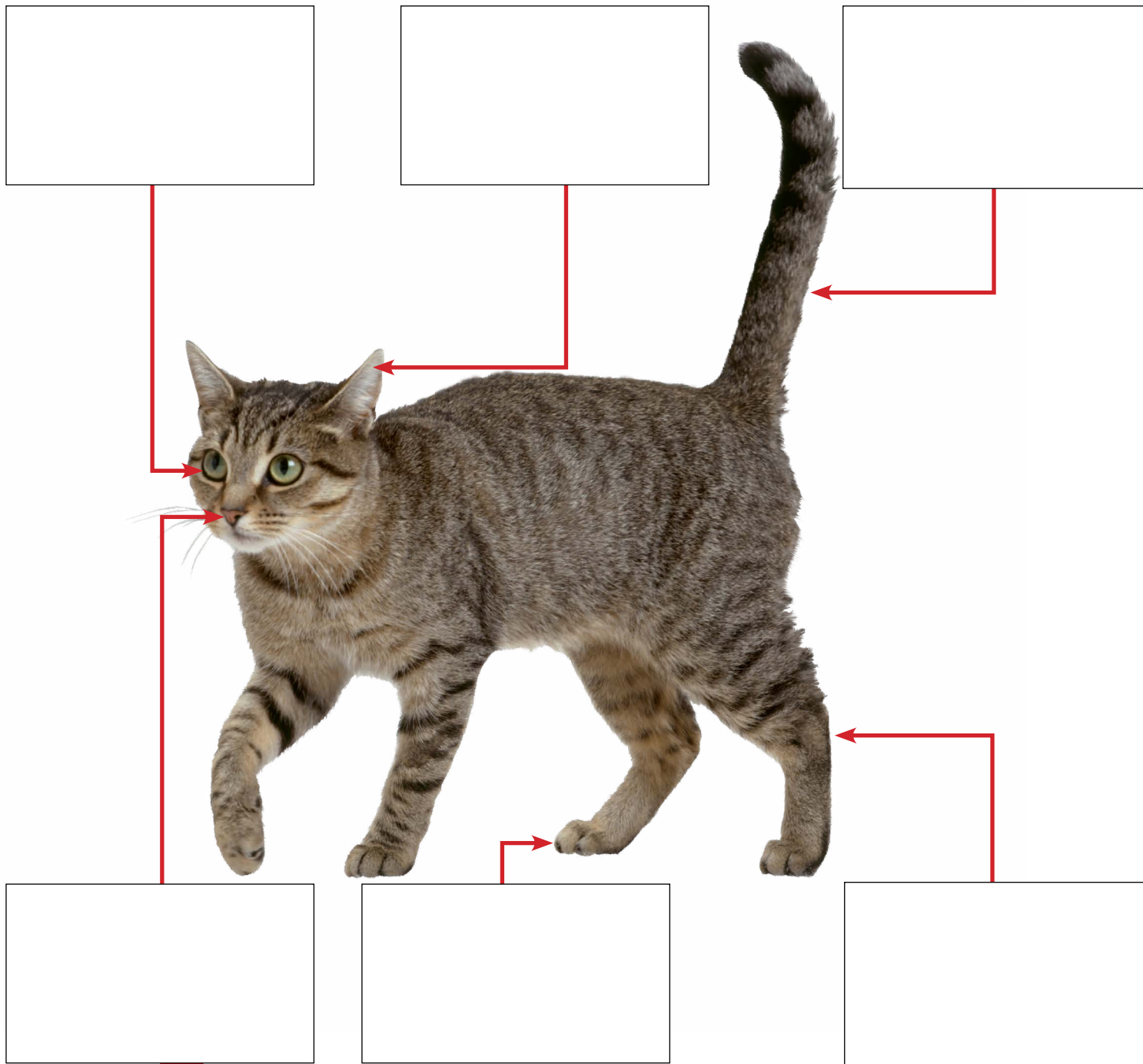
Meet the Cat

Follow the instructions to complete the activity.

NAME

DATE

Using the space provided, label each part of the cat below. Then, write a short sentence or two describing each part. Check your answers on pages 6 and 7 of the book.



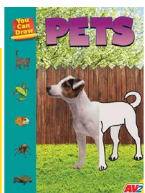
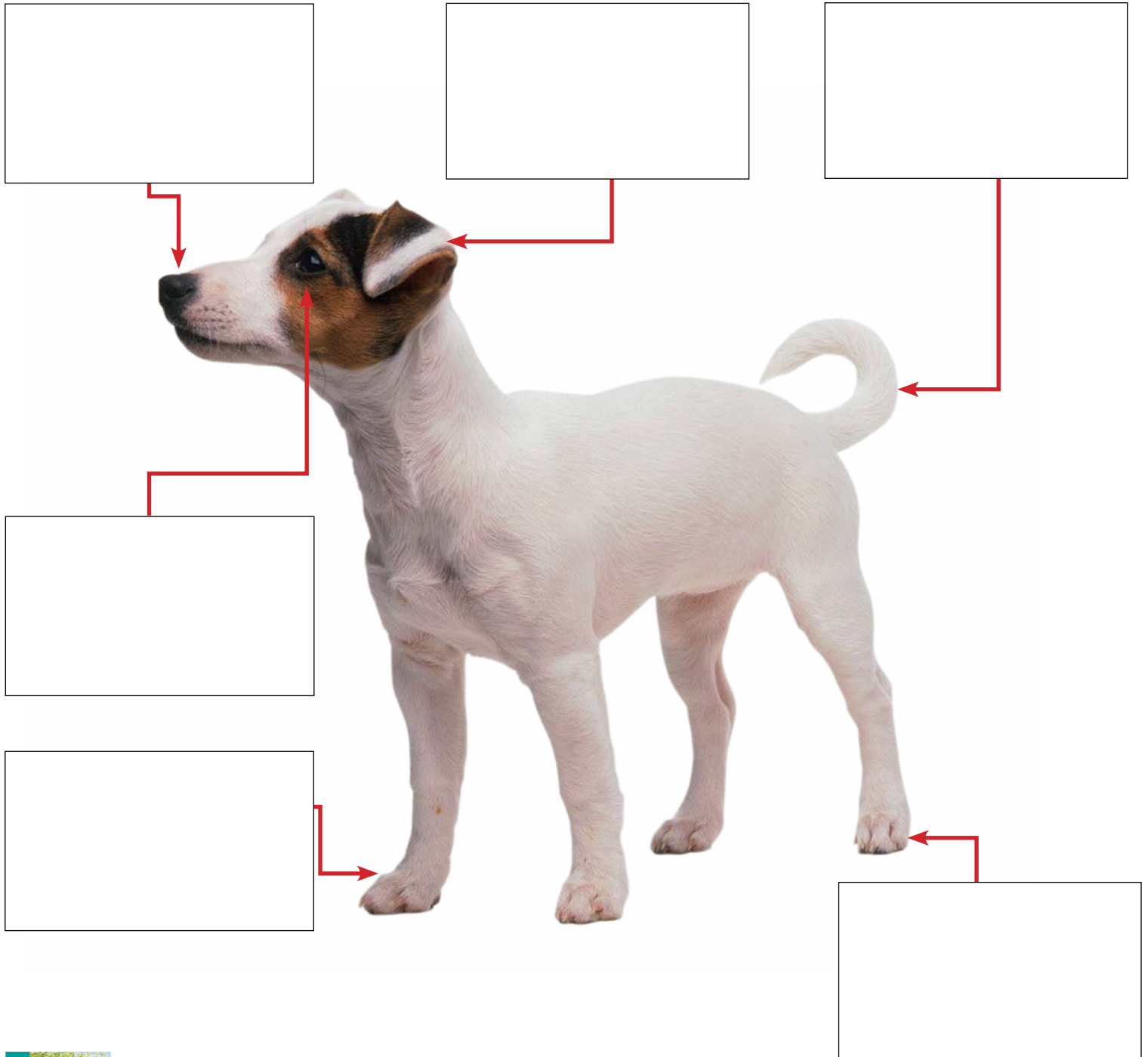
Meet the Dog

Follow the instructions to complete the activity.

NAME

DATE

Using the space provided, label each part of the dog below. Then, write a short sentence or two describing each part. Check your answers on pages 10 and 11 of the book.



You Can Draw
Pets

Reference: Pages 10-11

Page
1 of 2

LIGHTBOX
LEARNING

©2021 Lightbox Learning. All rights reserved.
www.openlightbox.com

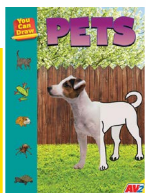
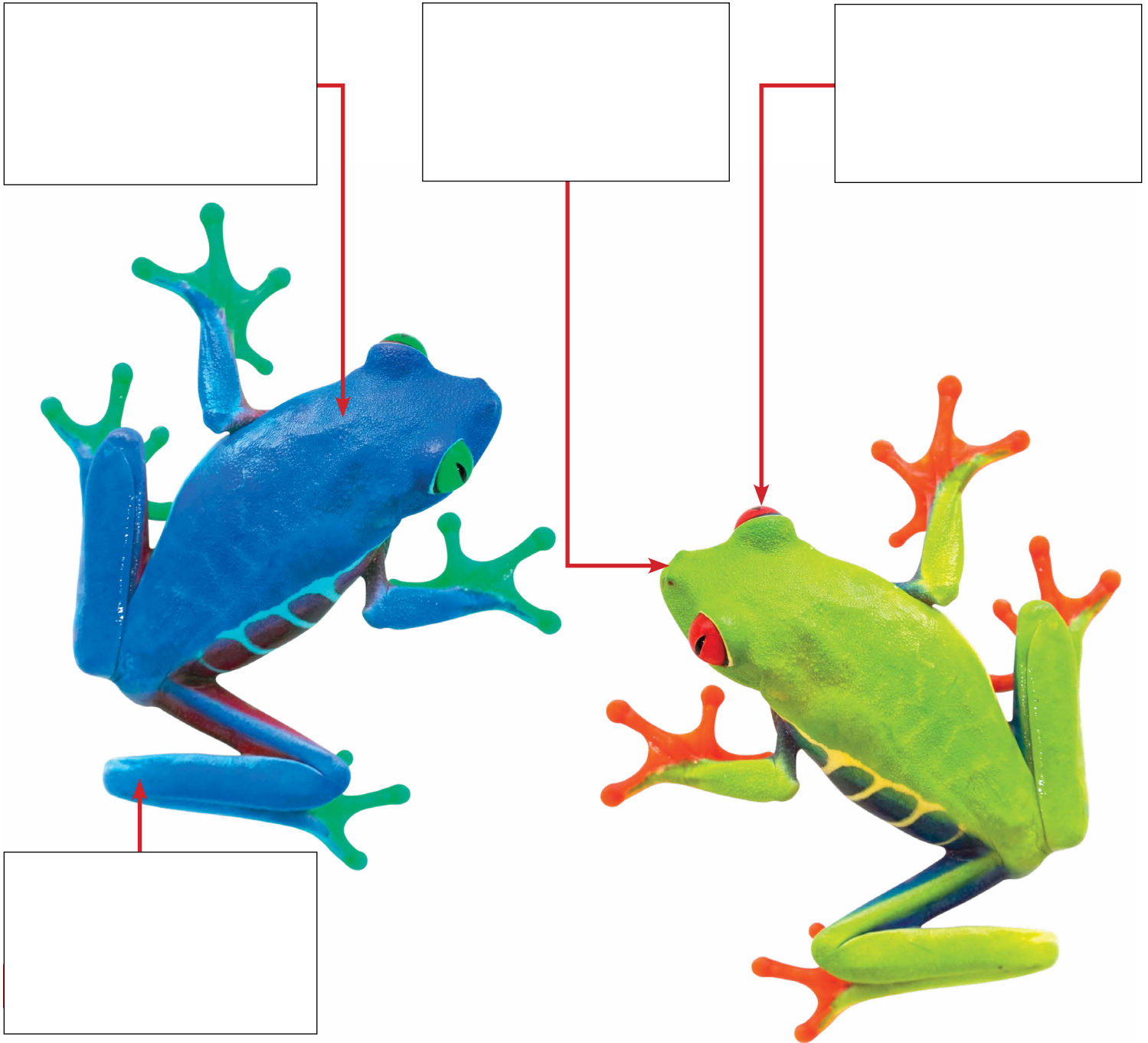
Meet the Frog

Follow the instructions to complete the activity.

NAME

DATE

Using the space provided, label each part of the frogs below. Then, write a short sentence or two describing each part. Check your answers on pages 14 and 15 of the book.



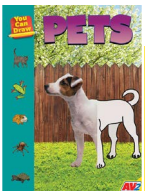
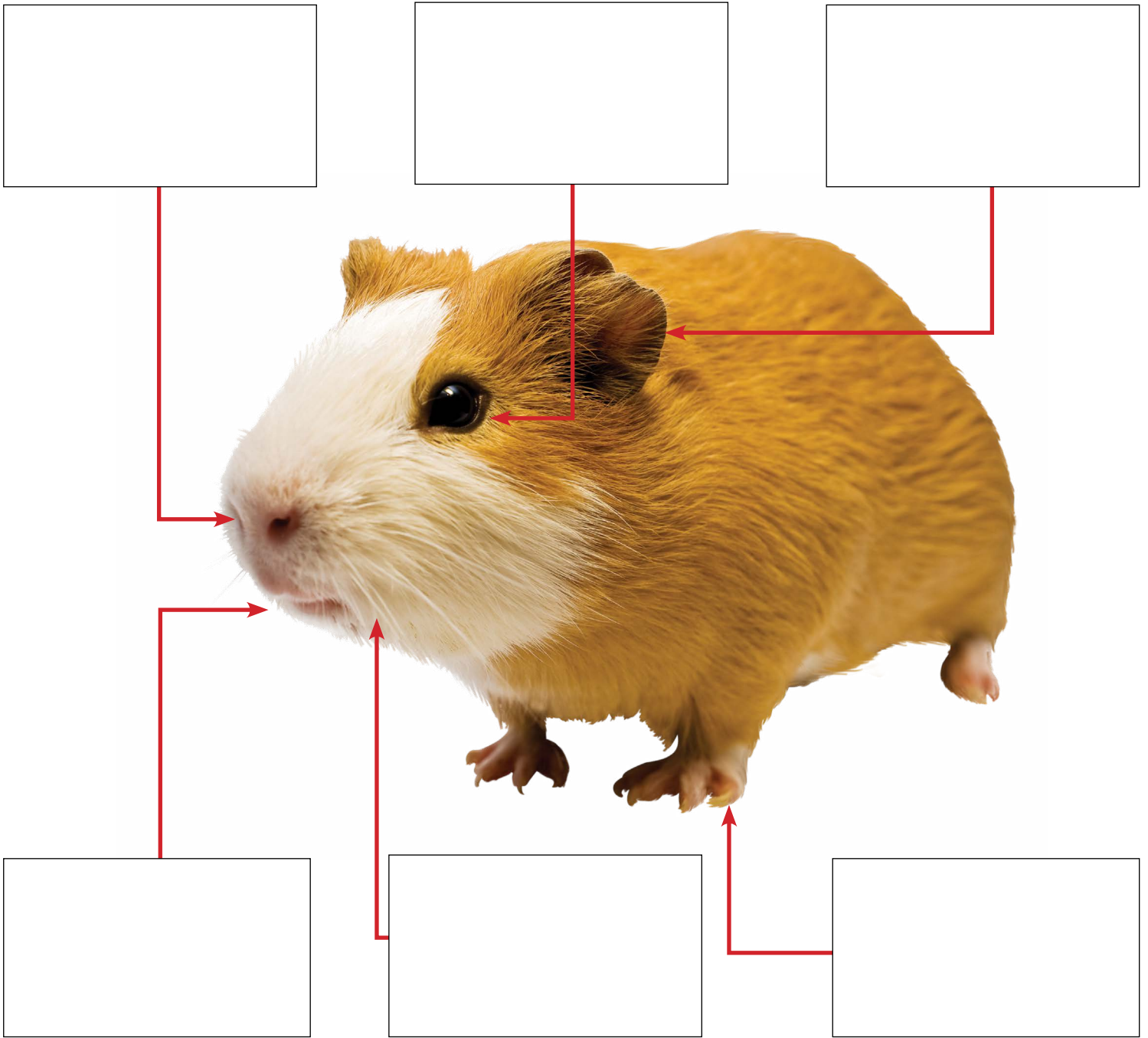
Meet the Guinea Pig

Follow the instructions to complete the activity.

NAME

DATE

Using the space provided, label each part of the guinea pig below. Then, write a short sentence or two describing each part. Check your answers on pages 18 and 19 of the book.



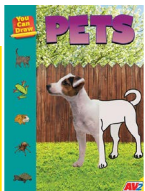
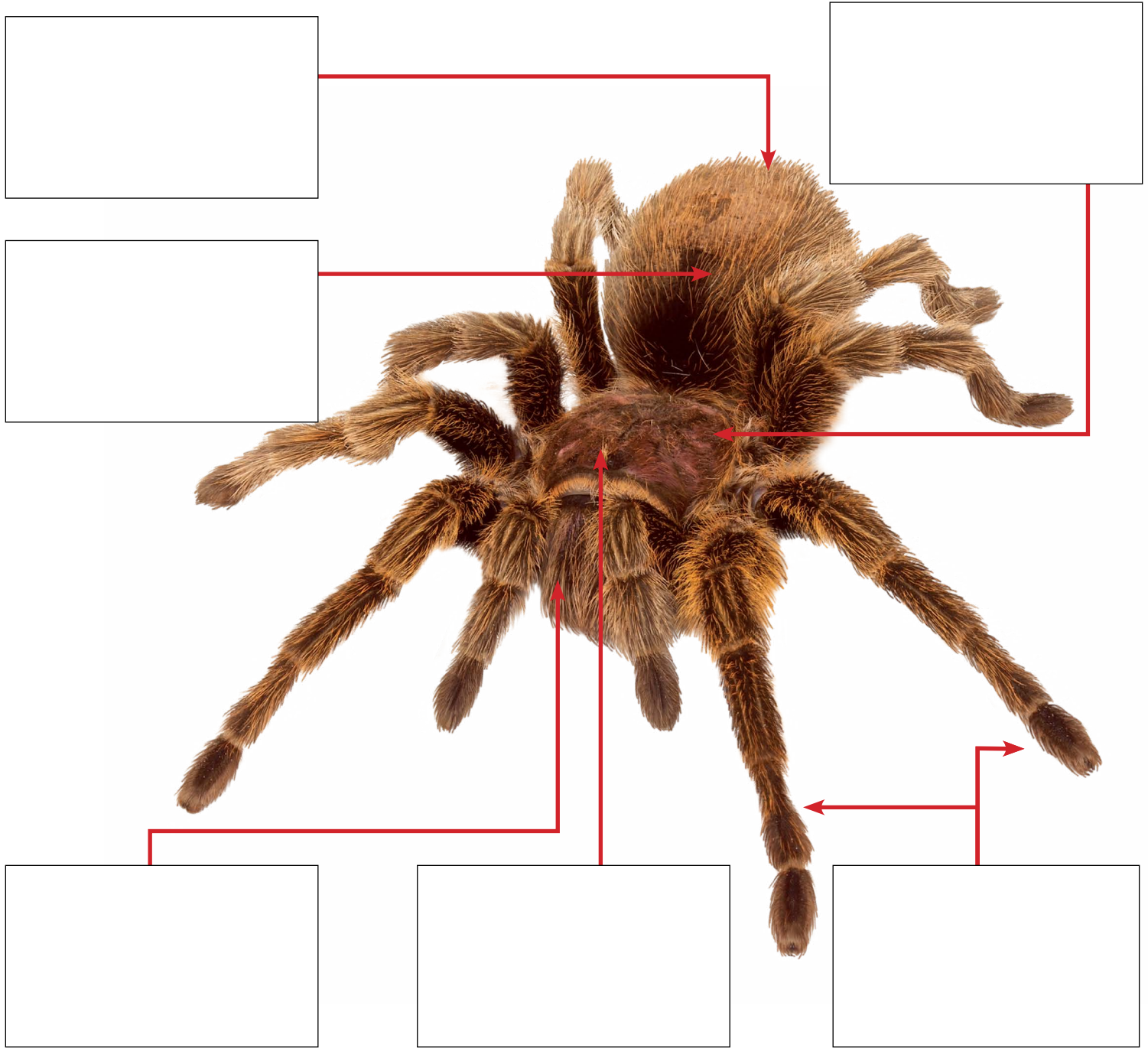
Meet the Spider

Follow the instructions to complete the activity.

NAME

DATE

Using the space provided, label each part of the spider below. Then, write a short sentence or two describing each part. Check your answers on pages 22 and 23 of the book.



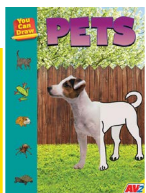
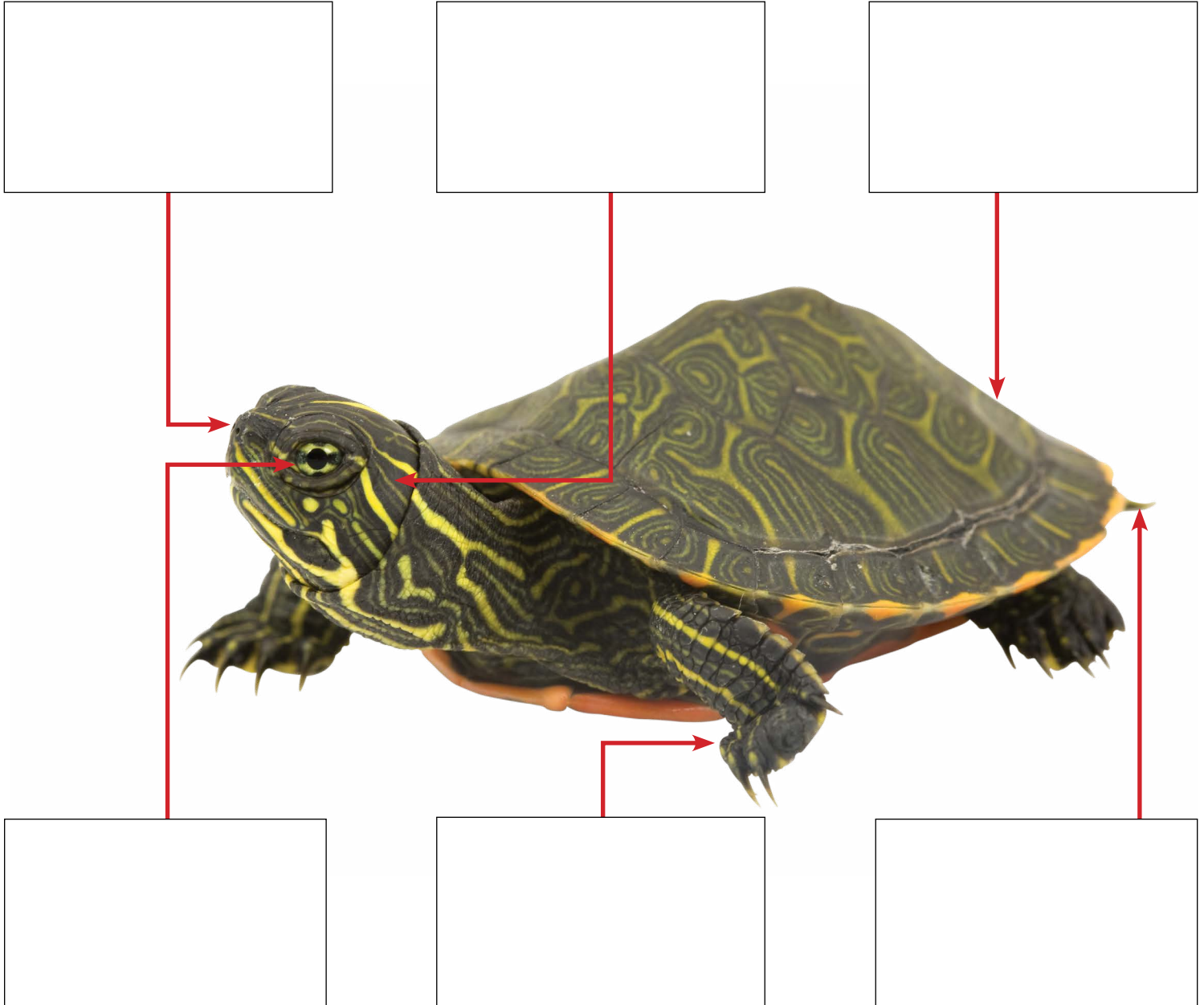
Meet the Turtle

Follow the instructions to complete the activity.

NAME

DATE

Using the space provided, label each part of the turtle below. Then, write a short sentence or two describing each part. Check your answers on pages 26 and 27 of the book.



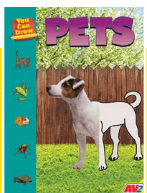
Quiz

Test your knowledge by answering these quiz questions.

NAME

DATE

- 1 How fast can a domestic cat run?
- 2 What type of cells cover the bones inside a dog's nose?
- 3 Where is a frog's Jacobson's organ located?
- 4 How many images per second can a guinea pig see?
- 5 What kind of lungs do spiders have?
- 6 What is one way to tell whether a turtle is male or female?
- 7 How many muscles does a dog's ear have?
- 8 What do guinea pigs use their whiskers for?
- 9 What body parts does a spider use to taste and smell things?
- 10 Where are a turtle's eardrums located?



You Can Draw

Pets

Reference: All Pages

Page
1 of 7

LIGHTBOX
LEARNING

©2021 Lightbox Learning. All rights reserved.
www.openlightbox.com

Key Words Match-Up

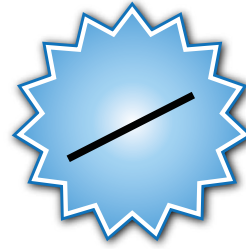
Write the words from the list below in the box above the correct definition for each word.

NAME

DATE

KEY WORDS

carapace	odors
exoskeleton	plastron
fragile	predators
independently	prey
keratin	silk

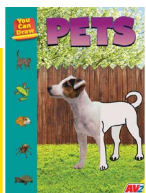


**Your
Score is**

%

1.
the hard outer shell of a spider
2.
a bad smell
3.
one at a time
4.
animals that are hunted for food
5.
the part of a turtle's shell that is on the back
6.
the part of a turtle's shell that is under the belly

7.
a hard substance that forms hair and nails
8.
easily broken
9.
a thin, strong material
10.
animals that hunt and eat other animals for food



You Can Draw

Pets

Reference: All Pages