

True or False

Follow the instructions to complete the activity.

NAME

DATE

Using the information in *Oceans*, verify whether the following information is true or false. Check your answers in the book. If the statement is false, write the correct answer below it. List the page number where you found your information beside your answer.

Statement 1

Jellyfish are a type of fish.

☐

True

☐

False

Page
Number

Statement 2

The ocean's floor is called the epipelagic zone.

☐

True

☐

False

Page
Number

Statement 3

Currents at Earth's surface move hot water away from Earth's equator.

☐

True

☐

False

Page
Number

Statement 4

Edinburgh of the Seven Seas is found on Tristan da Cunha, an island in the Atlantic Ocean.

☐

True

☐

False

Page
Number

Statement 5

The Pacific Ocean is the warmest ocean.

☐

True

☐

False

Page
Number



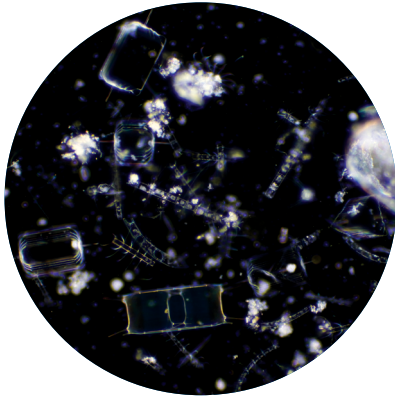
Ocean Energy

Follow the instructions to complete the activity.

NAME

DATE

Write the name of each organism in the space below its image. Then, match each organism to its ecosystem role by placing the correct letter beside its name.







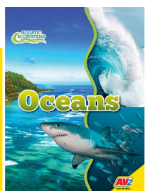


A - Primary consumer

C - Secondary consumer

B - Tertiary consumer

D - Producer



Offshore Oil Platforms

Follow the instructions to complete the activity.

NAME

DATE

Different oil platforms are built in different ocean waters around the world. Using the information on page 23 of *Oceans*, match each picture with its title. Then, complete the chart by explaining how each rig is built and what type of water it is meant for.



1. Fixed Platform



2. Compliant Tower



3. Semi-Submersible Platform



4. Spar Platform



Write an Expository Paragraph

Follow the instructions to complete the activity.

NAME

DATE

Use online resources and your local library to research examples of threats facing the ocean today. Then, write an expository paragraph in the space below. Describe the steps you think people could take to help counter threats to bays. You can use the second page of this activity to record your research.

An expository paragraph is a group of sentences that provide information on a topic, give directions, or explain an event. An expository paragraph has three parts. The first part is the topic sentence. It tells readers what the paragraph will be about and catches their attention. Supporting sentences generally follow the topic sentence. They provide details explaining or supporting the topic sentence. At the end of an expository paragraph, a sentence wraps up, or summarizes, the ideas expressed in the paragraph. This is called the concluding sentence. It is usually a strong statement.

Topic Sentence:

Supporting Sentence:

Concluding Sentence:



Test your knowledge of bays by answering these brain teasers.

How did Earth's ocean form?

How can an ocean affect the climate of nearby areas?

How do producers in ocean areas with no light make energy?

How does overfishing threaten ocean animals?

What kinds of resources do people get from the ocean?



Quiz

Test your knowledge of bays by answering these quiz questions.

NAME

DATE

- 1** How much seafood is caught by fishers every year?
- 2** What do leatherback sea turtles eat?
- 3** Where is the busiest port on Earth located?
- 4** What is the name for a huge wave caused by underwater earthquakes or eruptions?
- 5** Do plankton move on their own?
- 6** What is it called when fishers accidentally catch fish they do not want?
- 7** What are the largest dolphins on Earth?
- 8** What is the upper part of the ocean called?



Key Words Match-Up

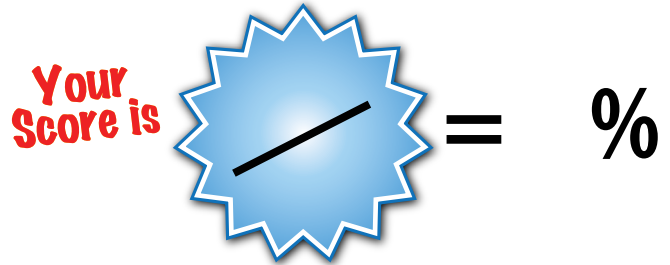
Write the words from the list below in the box above the correct definition for each word.

NAME

DATE

KEY WORDS

algae	invertebrate
ecosystems	kidneys
equator	molten
erosion	omnivores
herbivores	photosynthesize



- | | |
|---|---|
| <p>1. <input type="text"/></p> <p>when something is worn away over time by water and wind</p> | <p>6. <input type="text"/></p> <p>hot, liquid rock</p> |
| <p>2. <input type="text"/></p> <p>an animal without a backbone</p> | <p>7. <input type="text"/></p> <p>an imaginary line drawn east to west around the middle of Earth</p> |
| <p>3. <input type="text"/></p> <p>communities made of living things and the places in which they live</p> | <p>8. <input type="text"/></p> <p>animals that eat meat and plants</p> |
| <p>4. <input type="text"/></p> <p>animals that only eat plants</p> | <p>9. <input type="text"/></p> <p>plantlike organisms that produce energy from sunlight</p> |
| <p>5. <input type="text"/></p> <p>to turn light from the Sun into usable energy</p> | <p>10. <input type="text"/></p> <p>organs used to remove waste</p> |

