

True or False

Follow the instructions to complete the activity.

NAME

DATE

Using the information in *Anthills*, verify whether the following information is true or false. Check your answers in the book. List the page number where you found your information beside your answer.

Statement 1	An anthill's dome shape helps it absorb the Sun's heat.	<input type="checkbox"/> True <input type="checkbox"/> False	Page Number	<input type="text"/>
Statement 2	Young ants begin working above ground.	<input type="checkbox"/> True <input type="checkbox"/> False	Page Number	<input type="text"/>
Statement 3	The largest ant colony in the world spreads from Portugal to Spain.	<input type="checkbox"/> True <input type="checkbox"/> False	Page Number	<input type="text"/>
Statement 4	Ants help keep the ground clear of dead leaves.	<input type="checkbox"/> True <input type="checkbox"/> False	Page Number	<input type="text"/>
Statement 5	When ants build an anthill, they affect the area around them.	<input type="checkbox"/> True <input type="checkbox"/> False	Page Number	<input type="text"/>



Nature's Engineers

Ant Hills

Reference: All Pages

Page
1 of 1

LIGHTBOX
LEARNING

©2020 Lightbox Learning. All rights reserved.
www.openlightbox.com

Image Match

Follow the instructions to complete the activity.

NAME

DATE

Using information found in the book, match each image to the sentence that best describes it. Write the number for each sentence in the space provided.

Image

Number



Sentence 1

Soldier ants protect the anthill from attackers.



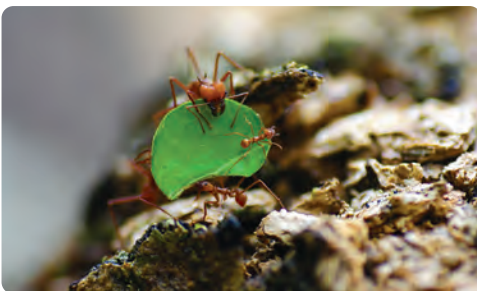
Sentence 2

Many ants add twigs, leaves, or small stones to their anthill.



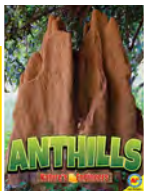
Sentence 3

Ants collect honeydew from aphids, a type of insect.



Sentence 4

Ants break apart leaves that fall to the ground.



Fill in the Blanks

Follow the instructions to complete the activity.

NAME

DATE

Use the information found in *Anthills* to help you complete the following activity.

1. Ants may take and food from other animals.
2. may rest on anthills and bask in the Sun.
3. As ants dig , they move soil around.
4. The anthill is the entrance to the .
5. A worker's strong can cut and carry objects.
6. Every anthill begins with a .



Nature's Engineers

Ant Hills

Reference: All Pages

Page
1 of 3

LIGHTBOX
LEARNING

©2020 Lightbox Learning. All rights reserved.
www.openlightbox.com

Complete the statements by writing the correct number in the box.

Ants can carry objects that are about this many times heavier than themselves.

3

Chambers can be up to this many feet below the ground.

30

The largest ant colony in the world stretches for this many miles.

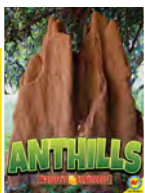
15

There are this many kinds of ants.

50

A queen ant can live for about this many years.

3,600



Ant Roles

Follow the instructions to complete the activity.

NAME

DATE

Each type of ant has an important role in the colony. Using the information found on pages 9–11 of the book, as well as the library and online content, research each type of ant. Beside each entry, write a short explanation of the role it plays in the colony. Once you are finished, find a partner and discuss your findings.

	Type of Ant	Role in the Colony
1.		
2.		
3.		



Key Words Match-Up

Write the words from the list below in the box above the correct definition for each word.

NAME

DATE

KEY WORDS

sap	queen
colony	mates
bask	collapse
mandibles	dome
nutrients	resources
chamber	



%

1.
substances that humans, animals, and plants need to stay strong and healthy

2.
a community of plants or animals of the same species that live close together

3.
to fall down or apart

4.
items, such as food or water, that animals and plants need to survive

5.
a rounded shape that looks like the top half of a ball

6.
to sit or lie in the Sun to stay warm

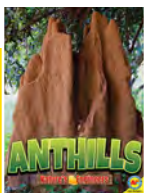
7.
joins together in order to have babies

8.
jaws that extend from an ant's head

9.
a space used as a room

10.
fluid from plants that contain water, sugar, and minerals

11.
a large female ant that lays the eggs for an ant colony



Quiz

Test your knowledge by answering these quiz questions.

NAME

DATE

1 What is an ant's home known as?

2 How many different kinds of ants work together to build an anthill?

3 How many years can a queen ant live for?

4 Do male or female ants become workers?

5 What does an ant use to cut and carry objects?

6 What insects make a sweet substance called honeydew?

7 How many years can worker ants live?

8 How many times heavier than an ant can an object be for an ant to carry the object?

