

Skeletal System Features

Follow the instructions to complete the activity.

NAME

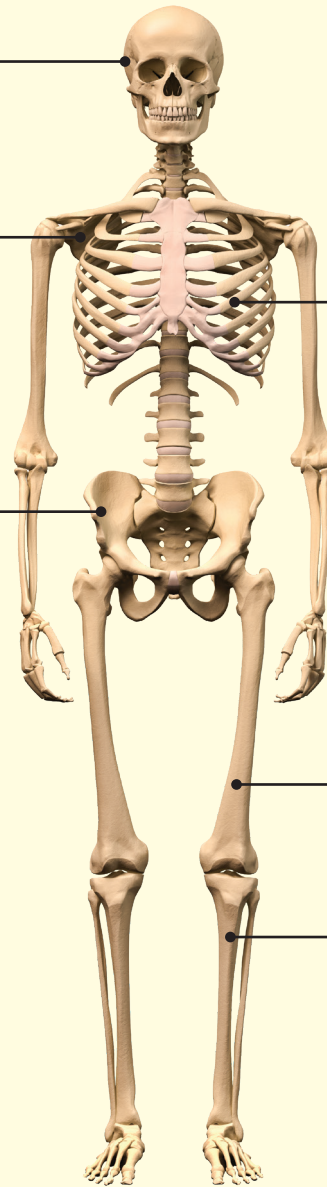
DATE

Label the features of the skeletal system. Check your answers with page 8 of the book.

These bones are located at the top of the skeleton.

Also known as the shoulder blade, there is one on each side of the body.

This connects the upper bones to the lower limbs and has slight differences between males and females.



Twelve pairs of these form a cage in the torso.

This is the largest bone in the human body.

This is the larger of the two bones that make up the lower leg.

